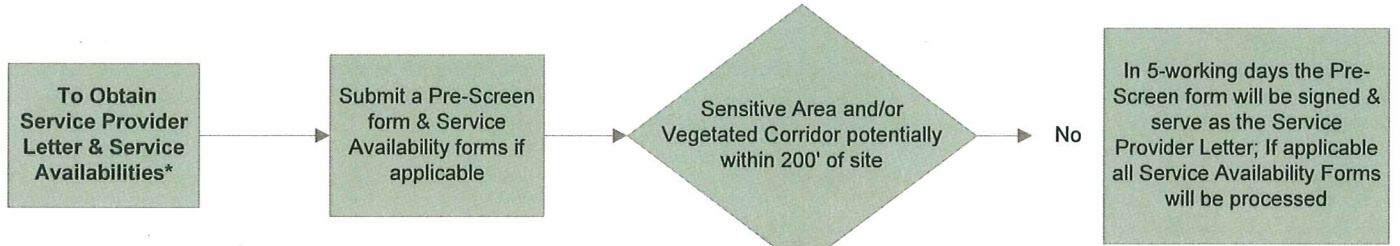
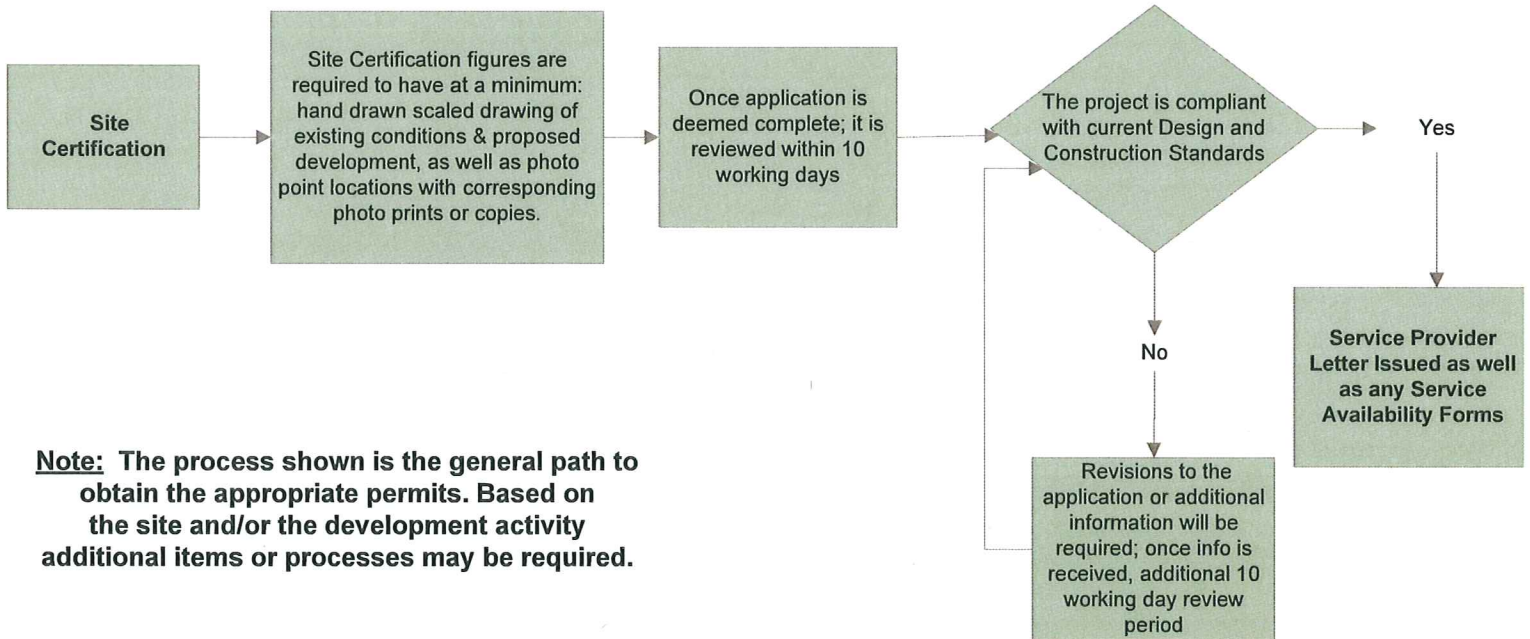


Environmental Review Pre-Screen and Site-Certification Application Process



* Service Availabilities are only for Projects within Washington County

*If you are a home owner proposing development activity, most likely you will need to go through the Site Certification process. All other development projects within 200 feet of a Sensitive Area require a Site Assessment unless waived in writing by the District (see [Site Assessment Link](#)).



Note: The process shown is the general path to obtain the appropriate permits. Based on the site and/or the development activity additional items or processes may be required.