

LEGEND

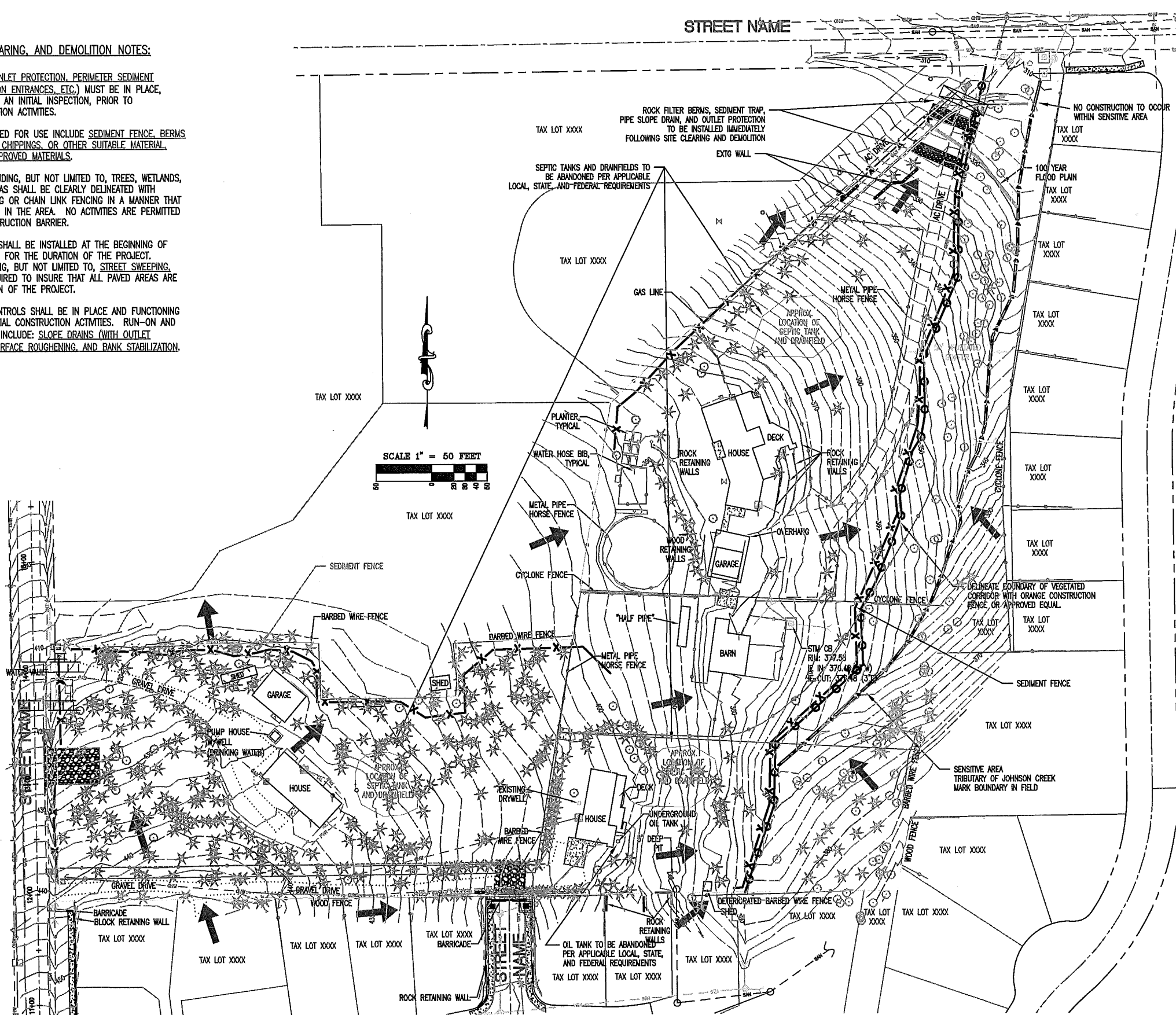
- EXISTING GROUND CONTOUR (2 FT)
- EXISTING GROUND CONTOUR (10 FT)
- EXISTING TREE TO REMAIN
- EXISTING TREE TO BE REMOVED
- SEDIMENT BARRIER (PERIMETER)
- SEDIMENT BARRIER (INTERIOR)
- ORANGE CONSTRUCTION FENCE
- SEDIMENT TRAP
- BRUSH BARRIER
- CHECK DAM
- CONSTRUCTION ENTRANCE
- DIVERSION DIKE
- DIVERSION SWALE
- DIVERSION DIKE/SWALE
- INLET PROTECTION
- SEDIMENT MAT
- TEMPORARY SLOPE DRAIN
- ROCK FILTER BERM
- TEMPORARY SLOPE STABILIZATION MEASURES
- DRAINAGE FLOW DIRECTION

PRE-CONSTRUCTION, CLEARING, AND DEMOLITION NOTES:

1. ALL BASE ESC MEASURES (INLET PROTECTION, PERIMETER SEDIMENT CONTROL, GRAVEL CONSTRUCTION ENTRANCES, ETC.) MUST BE IN PLACE, FUNCTIONAL, AND APPROVED IN AN INITIAL INSPECTION, PRIOR TO COMMENCEMENT OF CONSTRUCTION ACTIVITIES.
2. SEDIMENT BARRIERS APPROVED FOR USE INCLUDE SEDIMENT FENCE, BERMS CONSTRUCTED OUT OF MULCH, CHIPPINGS, OR OTHER SUITABLE MATERIAL, STRAW WATTLES, OR OTHER APPROVED MATERIALS.
3. SENSITIVE RESOURCES INCLUDING, BUT NOT LIMITED TO, TREES, WETLANDS, AND RIPARIAN PROTECTION AREAS SHALL BE CLEARLY DELINEATED WITH ORANGE CONSTRUCTION FENCING OR CHAIN LINK FENCING IN A MANNER THAT IS CLEARLY VISIBLE TO ANYONE IN THE AREA. NO ACTIVITIES ARE PERMITTED TO OCCUR BEYOND THE CONSTRUCTION BARRIER.
4. CONSTRUCTION ENTRANCES SHALL BE INSTALLED AT THE BEGINNING OF CONSTRUCTION AND MAINTAINED FOR THE DURATION OF THE PROJECT. ADDITIONAL MEASURES INCLUDING, BUT NOT LIMITED TO, STREET SWEEPING, AND VACUUMING, MAY BE REQUIRED TO INSURE THAT ALL PAVED AREAS ARE KEPT CLEAN FOR THE DURATION OF THE PROJECT.
5. RUN-ON AND RUN-OFF CONTROLS SHALL BE IN PLACE AND FUNCTIONING PRIOR TO BEGINNING SUBSTANTIAL CONSTRUCTION ACTIVITIES. RUN-ON AND RUN-OFF CONTROL MEASURES INCLUDE: SLOPE DRAINS (WITH OUTLET PROTECTION), CHECK DAMS, SURFACE ROUGHENING, AND BANK STABILIZATION.

THESE EROSION AND SEDIMENT CONTROL PLANS ASSUME "DRY WEATHER" CONSTRUCTION. "WET WEATHER" CONSTRUCTION MEASURES NEED TO BE APPLIED BETWEEN OCTOBER 1ST AND MAY 31ST.

* NOTE: PRE-DEVELOPED RUN-OFF SHEET FLOWS EASTERLY INTO ON-SITE DRAINAGE AND NORTHERLY ONTO ADJACENT PROPERTIES.



REVISIONS:

**CLEARING, DEMOLITION,
MASS GRADING, EROSION AND
SEDIMENT CONTROL PLAN**

ENGINEERING FIRM

DESIGNED BY: XXX
 DRAWN BY: XXX
 CHECKED BY: XXX
 PREPARED FOR:
 CLEAN WATER SERVICES
 2550 SW HILLSBORO HIGHWAY
 HILLSBORO, OR 97123
 PHONE: 503-681-3600
 FAX: 503-681-3803

PROJECT NAME

WASHINGTON COUNTY
 WASHINGTON COUNTY TAX MAP

OREGON
 WASHINGTON COUNTY TAX MAP



JOB NUMBER
XXXX

SHEET
XXXX

EXPIRES: Month Day Year